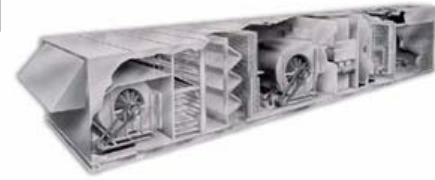


Now In Production

September 5th 2005



Orange County Law Library, Santa Ana, CA

Two Chilled Water cooling and Hot Water heating indoor multi-zone replacement units.

**Representative : Stanton Equipment Sales. 465 S. Westridge Circle, Anaheim Hills, California
Andy Stanton, Phone 714-685-8822**

One of the most difficult types of direct replacements is the replacement of indoor equipment. Often the old indoor units have been built at the job site based on installing contactors capabilities.

There are several factors involved in replacing an indoor multi-zone or single zone unit.

1- Is there an opening, elevator or stairs for the replacement unit to enter the building ?

This will allow us to determine how many sections the unit must be built in and the size of the largest section that we can build..

2- Is the control panel built in the unit or shipped separately to be installed in the room?

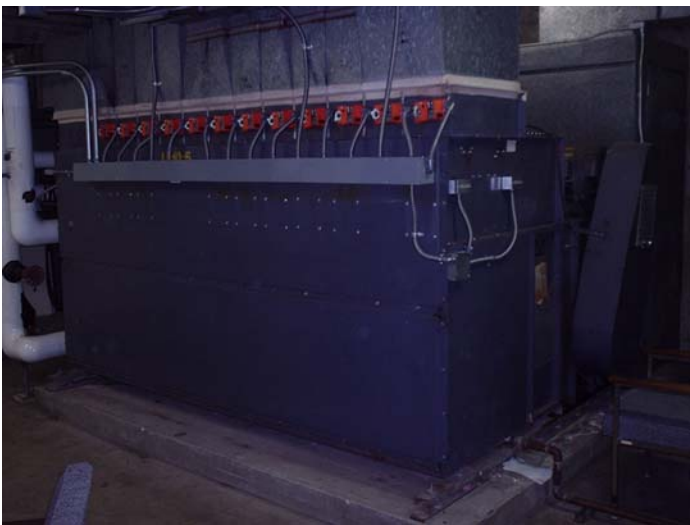
3- are there enough space around the unit for the access doors to open fully?

4- If the replacement unit is built to fit through the allowable opening, do the existing supply and return ducts require any transitioning?

The units will be built in sections but shipped attached to eliminate damage in transit.

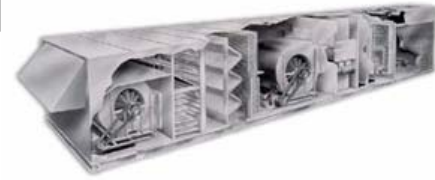
Existing Unit

Seasons-4 Replacement



Now In Production

September 5th 2005



Orange County Law Library, Santa Ana, CA

Two Chilled Water cooling and Hot Water heating indoor multi-zone replacement units.

Representative : Stanton Equipment Sales. 465 S. Westridge Circle, Anaheim Hills, California
 Andy Stanton, Phone 714-685-8822

412,942 BTUH Chilled Water cooling

384,251 BTUH Hot Water heating

12,000 CFM Airflow

IAQ drain pan, two airfoil plenum supply air fans, extended lube lines, belt guards on supply air fan and motor drives, unit is built in two sections.

