



# *Now In Production*

*APRIL 2009*

## **NATURALLY FRESH, INC., ATLANTA, GA**

Two (2) direct replacement sectional indoor air handlers for one of the best salad dressing producers in the world. **All stainless steel cabinets and welded floors.**

**Representative : Thermal Recovery Systems, Inc., 4942 Hammermill Road, Tucker, GA 30084**  
**Frank Fincher ; P 404-915-1211 ; F 803-593-7757 ; [www.thermalrecovery.com](http://www.thermalrecovery.com)**



An upblast housed airfoil DWDI blower with TEFC premium efficiency motor and VFD supplies 40,000 cfm of the air through Electro-Fin coated chilled water coils. The cabinet is built in two sections to fit through an opening in the building wall.



UV lights in chilled water coil section, stainless steel drain pan in all sections, service light in all accessible sections, and 2" pleated plus 12" cartridge filters in stainless steel frames are some of the features provided with the units.





# *Now In Production*

*APRIL 2009*

## **NATURALLY FRESH, INC., ATLANTA, GA**

Two (2) direct replacement sectional indoor air handlers for one of the best salad dressing producers in the world. **All stainless steel cabinets and welded floors.**

**Representative : Thermal Recovery Systems, Inc., 4942 Hammermill Road, Tucker, GA 30084**  
**Frank Fincher ; P 404-915-1211 ; F 803-593-7757 ; [www.thermalrecovery.com](http://www.thermalrecovery.com)**

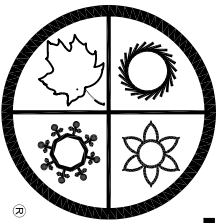


Sections are assembled together to ensure a proper fit, then cased with **stainless steel** exterior and interior panels and tested.



After testing is completed the units are split in two sections, prepared for shipping, and shipped to the jobsite for installation.



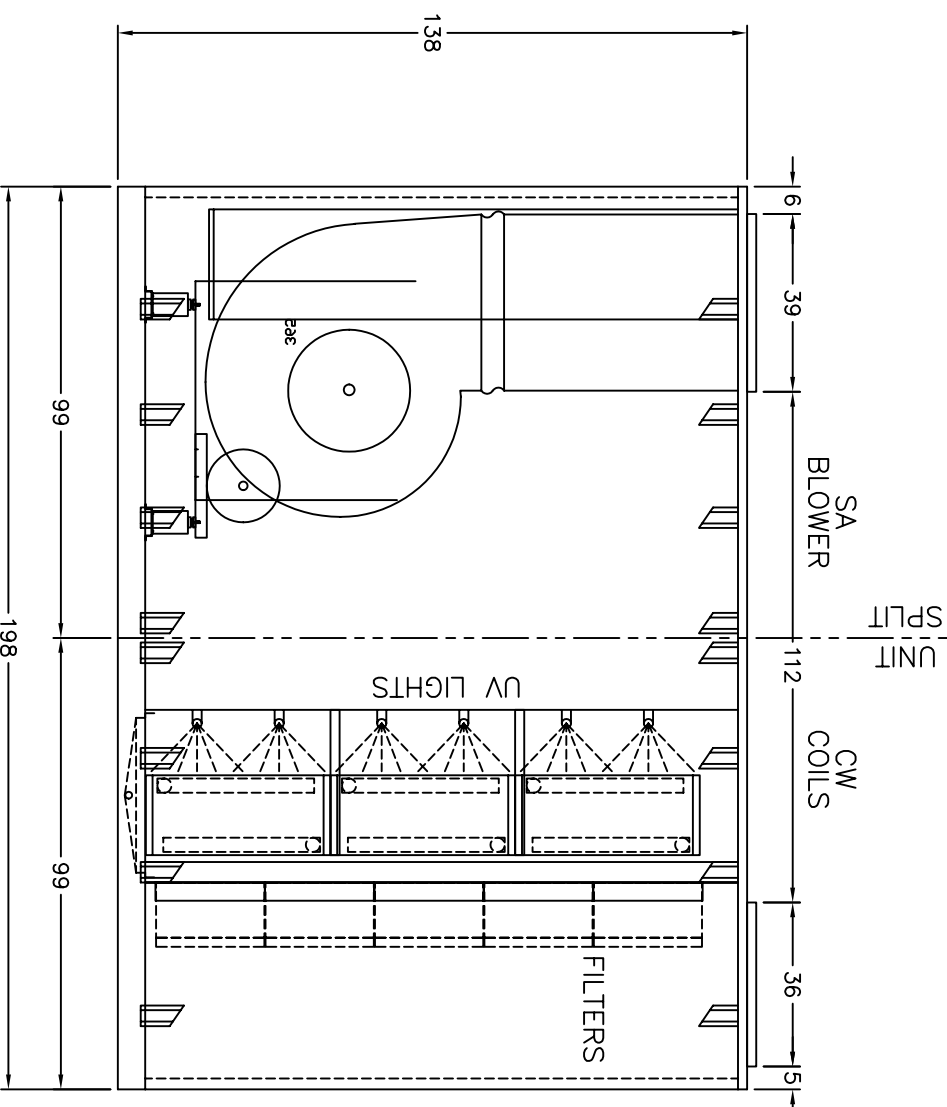
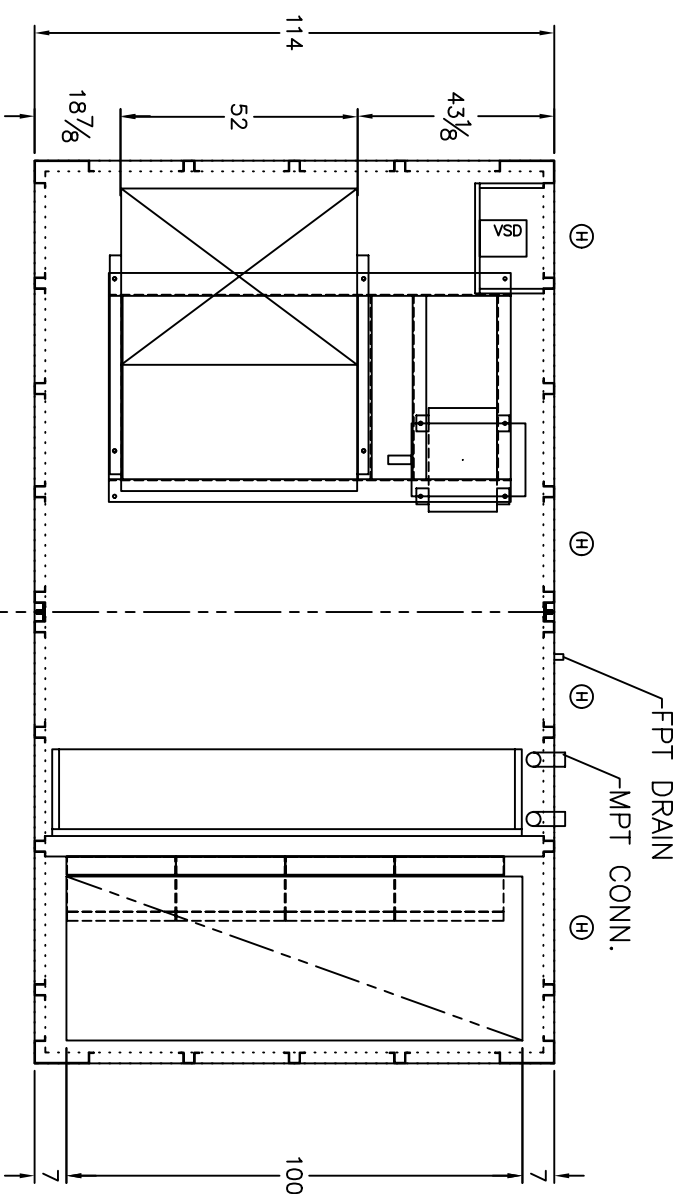


SEASONS 4

ENGINEERING AND MANUFACTURING HVAC EQUIPMENT SINCE 1971

# DIMENSIONAL DATA

NATURALLY FRESH, INC  
ATLANTA, GA  
AHU-4



- ⊕ HINGED DOOR
- ⊕ HINGED DOOR TOP & BOTTOM
- Ⓛ LIFT-OFF DOOR

NOTE: O.A./E.A. LOUVERS, FURNACE VENT CAPS, ETC. MAY REQUIRE FIELD INSTALLATION

4500 INDUSTRIAL ACCESS ROAD • DOUGLASVILLE, GEORGIA 30134-3949 • 770/489-0716 • FAX 770/489-2938

02/03/2009 JDP A383D02JP

# ENGINEERING SPECIFICATIONS

**JOB NAME** NATURALLY FRESH, INC  
**LOCATION** ATLANTA, GA  
**DATE PREPARED** 02/02/09  
**SEASONS-4 REFERENCE #** A383-02  
**UNIT MODEL #** 6SOT17-153A-XXXXX-40SE  
**UNIT DESIGNATION** AHU-4  
**SYSTEM VOLTAGE** 460/3/60

## DESIGN DATA

TOTAL COOLING CAPACITY (BTUH)	1,840,455
TOTAL AIRFLOW (CFM)	40,000

## CHILLED WATER COIL SECTION

FACE AREA (SQ-FT) for 3 Coils	78.1
ROWS/FPI	12/12
COIL CIRCUITS (NUMBER)	3
CAPACITY (BTUH) for 3 Coils	1,840,455
ENTERING AIR TEMP (FDB/FWB)	64.0/56.0
LEAVING AIR TEMP (FDB/FWB)	36.4/36.3
CONDITIONED AIR (ACFM)	40,000
ENTERING WATER TEMP (DEG F)	34.0
LEAVING WATER TEMP (DEG F)	44.2
FLOWRATE (GPM each Coil)	120.0
TYPE FLUID	WATER
FLUID PRESSURE DROP (FT WATER each Coil)	18.84
SUPPLY/RETURN CONNECTION SIZE (each Coil)	3 1/8, 3 1/8

## SUPPLY AIR BLOWER SECTION

TYPE	AF DWDI
NUMBER/SIZE	1/36.5"
AIRFLOW (CFM)	40,000
TOTAL STATIC PRESSURE (TSP) IN WC	5.75
EXTERNAL STATIC (ESP) IN WC	1.00
DESIGN FAN SPEED (RPM)	1,225
FAN BHP (INCLUDING DRIVE LOSSES)	49.8
MOTOR HP	50.0
MOTOR DRIVE	VARIABLE FREQUENCY DRIVE

## PREFILTER SECTION

TYPE	2" PLEATED (MERV 7)
NUMBER/SIZE	20/24x24
TOTAL FACE AREA (SQ-FT)	80.0
FACE VELOCITY (FPM)	500

## FILTER SECTION

TYPE	12" CARTRIDGE (MERV 14)
NUMBER/SIZE	20/24x24
TOTAL FACE AREA (SQ-FT)	80.0
FACE VELOCITY (FPM)	500

**ENGINEERING SPECIFICATIONS**

**ELECTRICAL DATA**

**JOB NAME** NATURALLY FRESH, INC  
**LOCATION** ATLANTA, GA  
**DATE PREPARED** 02/02/09  
**SEASONS-4 REF NUMBER** A383-02      **UNIT MODEL** 6SOT17-153A-XXXXX-40SE  
**UNIT DESIGNATION** AHU-4

<b>SYSTEM VOLTAGE</b>	460	<b>CONTROL VOLTAGE</b>	120	<b>EXT. VOLTAGE</b>	24	
<u>ITEM</u>	<u>QTY</u>	<u>HP</u>	<u>FLA</u>	<u>LRA</u>	<u>KW</u>	<u>TYPE</u>
SA FAN	1	50.0	57.0	378.0	39.3	Bald
TOTALS (COOL)	1	50.0	57.0		39.3	
TOTALS (HEAT)	1	50.0	57.0		39.3	

M.C.A.       (MINIMUM CIRCUIT AMPACITY)  
M.O.P.       (MAXIMUM OVERLOAD PROTECTION)  
S.C.C.R.       (SHORT CIRCUIT CURRENT RATING)