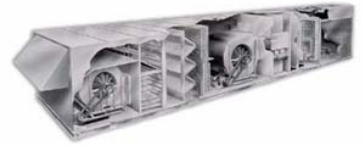


Now In Production

OCTOBER 2009



Indoor Action Sports, Greenfield, MA

One (1) direct replacement single zone air handling unit.

Multiple blowers, 43,000 cfm of supply air and 4,000,000 btuh output propane gas burners.

Representative : GreenTech. 130 Research Parkway, Meriden, CT, 06450

Paul E. Holland, P 203-639-9610; F 203-639-9617 ; www.grntch.com

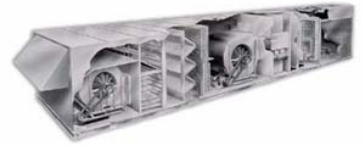


4 airfoil plenum blowers, two 2,000 mbh output propane burners and the unit is built in two sections



Now In Production

OCTOBER 2009



Indoor Action Sports, Greenfield, MA

One (1) direct replacement single zone air handling unit.

Multiple blowers, 43,000 cfm of supply air and 4,000,000 btuh output propane gas burners.

Representative : GreenTech. 130 Research Parkway, Meriden, CT, 06450

Paul E. Holland, P 203-639-9610; F 203-639-9617 ; www.grntch.com



Sections are bolted together and the unit is prepared for casing.



The unit is cased with aluminum exterior panels, tested and split in two sections and shipped to the jobsite for installation.



4500 Industrial Access Road Douglasville, GA 770-489-0716 P ; 770-489-2938 F ; www.seasons4.net

ENGINEERING SPECIFICATIONS

JOB NAME INDOOR ACTION SPORTS
LOCATION GREENFIELD, MA
DATE PREPARED Revised: 09/18/09
SEASONS-4 REFERENCE # A505
UNIT MODEL # 6SUT16-XXXX-PP50.-43SE
UNIT DESIGNATION BIU-1
SYSTEM VOLTAGE 460/3/60

DESIGN DATA

TOTAL AIRFLOW (CFM)	43,000
OUTDOOR AIR (CFM)	0 - 43,000

SUPPLY AIR BLOWER SECTION

TYPE	AF SWSI PLENUM
NUMBER/SIZE	4/27"
AIRFLOW (CFM)	43,000
TOTAL STATIC PRESSURE (TSP) IN WC	4.00
EXTERNAL STATIC (ESP) IN WC	0.00
DESIGN FAN SPEED (RPM)	1,403
FAN BHP (INCLUDING DRIVE LOSSES)	4 @ 9.43
MOTOR HP	4 @ 10
MOTOR DRIVE	ADJUSTABLE SHEAVE

GAS HEAT SECTION

TYPE	PROPANE GAS; POWER BURNER
INPUT CAPACITY (BTUH)	5,000,000
OUTPUT CAPACITY (BTUH)	4,000,000
CONDITIONED AIR (CFM)	43,000
CONDITIONED AIR TR (F)	86
STAGING	100/50/0
GAS CONNECTION SIZE (MPT)	2-1/2"
MIN GAS PRESSURE (IN-WC)	11"
MAX GAS PRESSURE (IN-WC)	14"

UNIT WEIGHT (LBS) 16,550

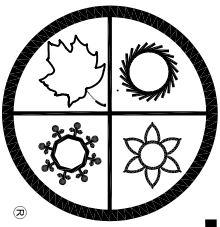
ENGINEERING SPECIFICATIONS

ELECTRICAL DATA

JOB NAME INDOOR ACTION SPORTS
LOCATION GREENFIELD, MA
DATE PREPARED Revised: 09/18/09
SEASONS-4 REF NUMBER A505 **UNIT MODEL** 6SUT16-XXXX-PP50.-43SE
UNIT DESIGNATION BIU-1

SYSTEM VOLTAGE	460	CONTROL VOLTAGE	120	EXT. VOLTAGE	24	
<u>ITEM</u>	<u>QTY</u>	<u>HP</u>	<u>FLA</u>	<u>LRA</u>	<u>KW</u>	<u>TYPE</u>
SA FAN	4	10.0	12.5	96.0	7.7	Bald
CONTROL CIRCUIT			6.5			
CONVENIENCE OUTLET			3.3			10 Amps
DRAFT EXHAUSTER	1	1.5	3.0	0.0	0.0	
DRAFT EXHAUSTER	1	1.5	3.0	0.0	0.0	
TOTALS (COOL)	4	***	59.8		30.7	
TOTALS (HEAT)	6	43.0	65.8		30.7	

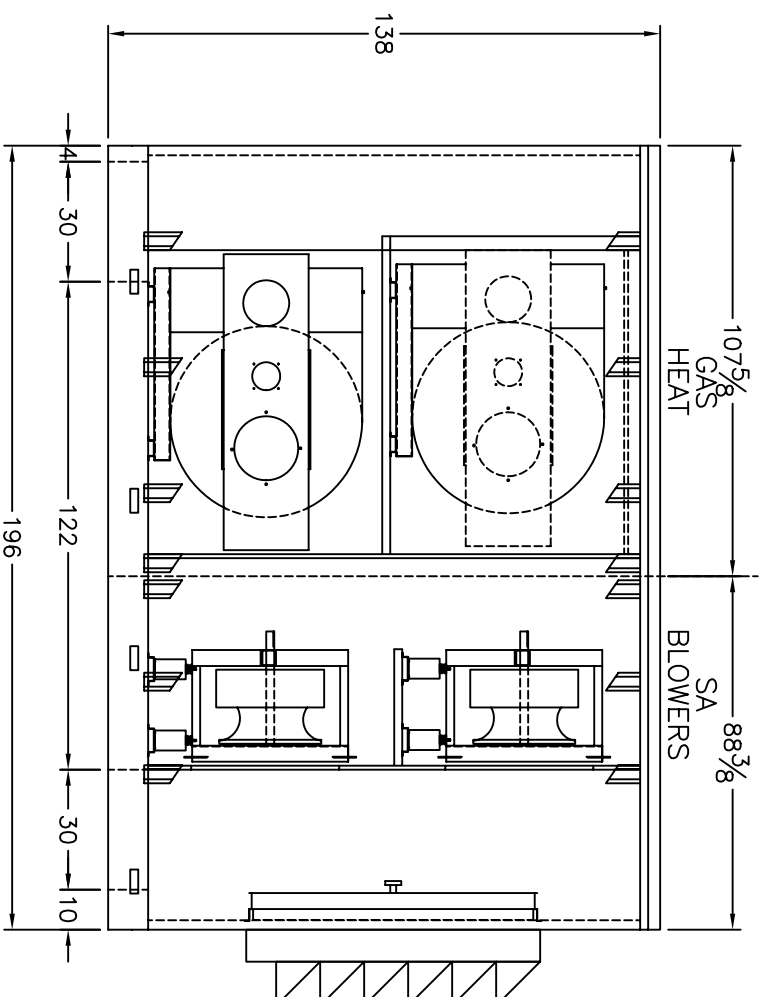
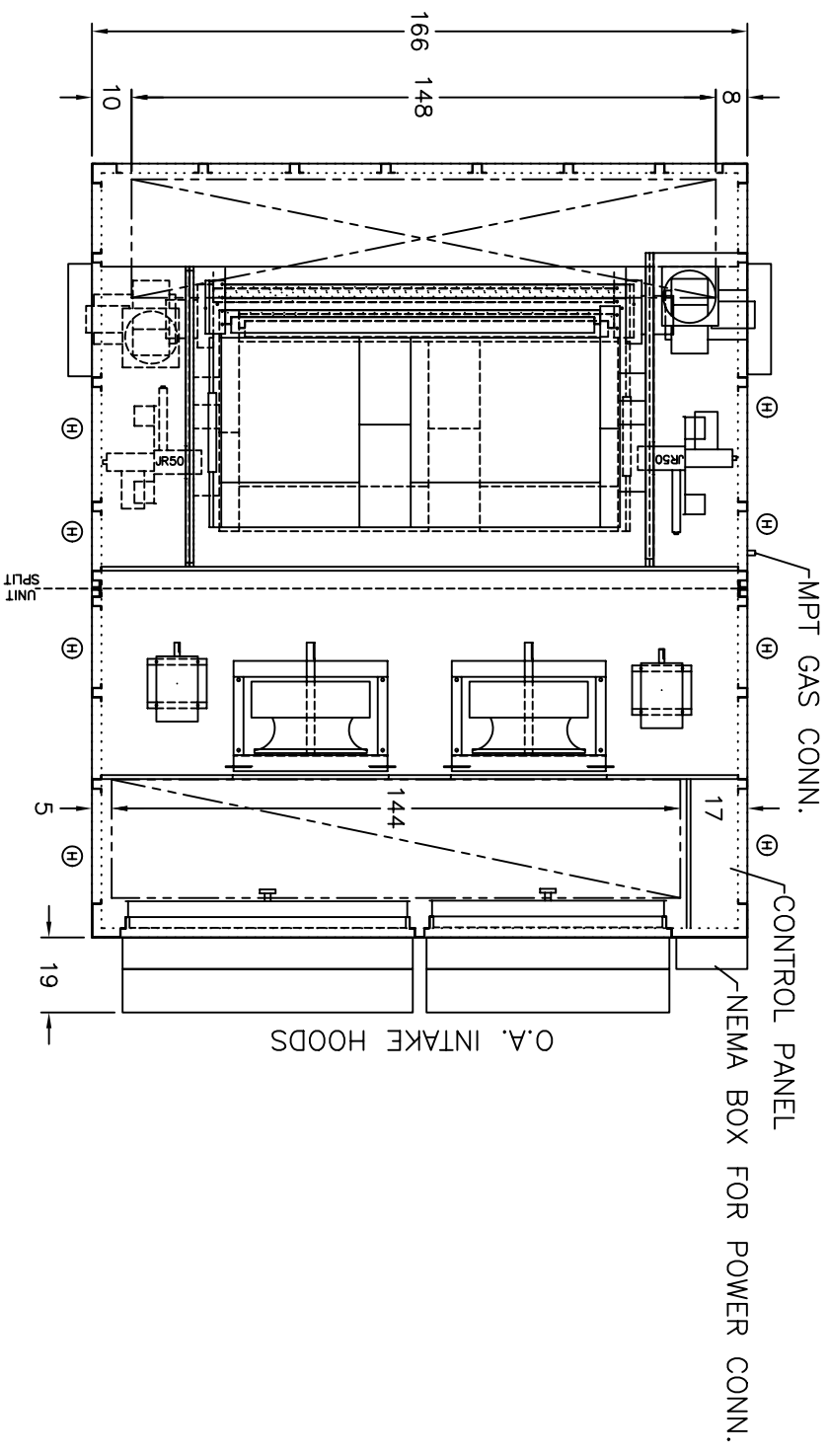
M.C.A. (MINIMUM CIRCUIT AMPACITY)
M.O.P. (MAXIMUM OVERLOAD PROTECTION)
S.C.C.R. (SHORT CIRCUIT CURRENT RATING)

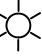





SEASONS.4

DIMENSIONAL DATA

INDOOR ACTION SPORTS
GREENFIELD, MA
BIU-1



-  LIGHT
-  HINGED DOOR
-  HINGED DOOR TOP & BOTTOM
-  LIFT-OFF DOOR

NOTE: O.A./E.A. LOUVERS, FURNACE VENT CAPS, ETC. MAY REQUIRE FIELD INSTALLATION

08/07/2009 JDP A505D000JP