



Now In Production

MAY 2011

Westfield SHOPPINGTOWN, Vancouver, WA

Four (4) 62 ton custom direct replacement units with air cooled condensing sections and gas heat.

**Representative : Bayer HVAC. 19744 Beach Blvd. Suite 380 Huntington Beach, CA 92648
Steve & Bob Bayer; P 714-244-8500; F 800-598-8790 ; www.bayerhvac.com**



Existing



Direct replacement

Each unit has a T-shape configuration. They had to be built in 3 sections, shipped in pieces and assembled at the job site. The units are designed so all refrigeration piping remains intake to keep downtime to minimum.



The cabinets are constructed of a welded structural steel base, aluminum exterior panels and 2" polyurethane foam insulation with R value of 13.



4500 Industrial Access Road Douglasville, GA 770-489-0716 P ; 770-489-2938 F ; www.seasons4.net



Now In Production

MAY 2011

Westfield SHOPPINGTOWN, Vancouver, WA

Four (4) 62 ton custom direct replacement units with air cooled condensing sections and gas heat.

**Representative : Bayer HVAC. 19744 Beach Blvd. Suite 380 Huntington Beach, CA 92648
Steve & Bob Bayer; P 714-244-8500; F 800-598-8790 ; www.bayerhvac.com**



Six scroll compressors with digital lead compressor, R-410a refrigerant, dual airfoil plenum blowers, premium efficiency motors with VFDs and Heatco tubular natural gas burners are some of the features provided.



Full economizer sections, smoke detectors and customer provided DDC system are additional features provided. The units are completely tested, disassembled and shipped to their destination in sections.



ENGINEERING SPECIFICATIONS

JOB NAME	WESTFIELD MALL
LOCATION	VANCOUVER WA
DATE PREPARED	01/07/11
SEASONS-4 REFERENCE #	A84701
UNIT MODEL #	6SCI28-0626-TN5.0-24SE
UNIT DESIGNATION	AC-1,3,4,6
SYSTEM VOLTAGE	460/3/60

DESIGN DATA

TOTAL COOLING CAPACITY (BTUH)	748,291
TOTAL AIRFLOW (CFM)	24,000
OUTDOOR AIR (CFM)	4,800 - 24,000
ESTIMATED REFRIGERANT CHARGE (LBS. R410A)	187
UNIT EER (REF AHRI 340/360)	11.2

COMPRESSOR SECTION

COMPRESSOR:

TYPE	COPELAND SCROLL (TANDEM)
NUMBER	6
STAGES OF CAPACITY	MODULATING (DIGITAL LEAD COMP)

AIR COOLED CONDENSER SECTION

CONDENSER COIL:

COIL FACE AREA/ROWS/FPI	166.7/6/10
DESIGN AMBIENT TEMPERATURE (FDB):	95.0

CONDENSER FANS:

TYPE	PROPELLER
DIA/RPM	30/1,140
QTY/HP	5/1.0

COOLING COIL SECTION 1

FACE AREA (SQ-FT)	52.2
ROWS/FPI	4/12
COIL CIRCUITS (NUMBER)	3
TOTAL CAPACITY (BTUH)	748,291
SENSIBLE CAPACITY (BTUH)	550,327
ENTERING AIR TEMP (FDB/FWB)	80.0/67.0
COIL LEAVING AIR TEMP (FDB/FWB)	59.2/57.1
CONDITIONED AIR (CFM)	24,000

SUPPLY AIR BLOWER SECTION

TYPE	AF SWSI PLENUM (ALUM CONSTRUCTION)
NUMBER/SIZE	2/24.5"
AIRFLOW (CFM)	24,000
TOTAL STATIC PRESSURE (TSP) IN WC	3.38
EXTERNAL STATIC (ESP) IN WC	1.50
DESIGN FAN SPEED (RPM)	1,724
FAN BHP (INCLUDING DRIVE LOSSES)	2 @ 9.85
MOTOR HP	2 @ 10
MOTOR DRIVE	VARIABLE FREQUENCY DRIVE

ENGINEERING SPECIFICATIONS

FILTER SECTION

TYPE	2" PLEATED; MERV 7
NUMBER/SIZE	24/16x20
TOTAL FACE AREA (SQ-FT)	53.3
FACE VELOCITY (FPM)	450

GAS HEAT SECTION

TYPE	NATURAL GAS; TUBULAR DUCT FURNACE
INPUT CAPACITY (BTUH)	500,000
OUTPUT CAPACITY (BTUH)	400,000
CONDITIONED AIR (CFM)	24,000
CONDITIONED AIR TR (F)	15
STAGING	MODULATING
GAS CONNECTION SIZE (MPT)	1"
MIN GAS PRESSURE (IN-WC)	7"
MAX GAS PRESSURE (IN-WC)	14"

UNIT SECTION WEIGHTS (LBS)

CONDENSING SECTION, COIL & BLOWER SECTIONS	9,000
ECONOMIZER SECTION	3,300
HEATING SECTION	1,550

UNIT WEIGHT (LBS) 13,850

**ENGINEERING SPECIFICATIONS
ELECTRICAL DATA**

JOB NAME WESTFIELD MALL
LOCATION VANCOUVER WA
DATE PREPARED 01/07/11
SEASONS-4 REF NUMBER A84701 **UNIT MODEL** 6SCI28-0626-TN5.0-24SE
UNIT DESIGNATION AC-1,3,4,6

SYSTEM VOLTAGE 460 **CONTROL VOLTAGE** 120 **EXT. VOLTAGE** 24

<u>ITEM</u>	<u>QTY</u>	<u>HP</u>	<u>FLA</u>	<u>LRA</u>	<u>KW</u>	<u>TYPE</u>
COMPRESSOR 1	1	***	18.6	114.0	7.6	ZPD103KCE
COMPRESSOR 1 (TDM)	1	***	18.6	114.0	7.6	ZP103KCE
COMPRESSOR 2	4	***	18.6	114.0	7.7	ZP103KCE
COND FAN	5	1.0	2.0	12.0	1.0	
SA FAN	2	10.0	12.5	96.0	8.0	Bald
CONTROL CIRCUIT			3.3			
CONVENIENCE OUTLET			3.3			10 Amps
<hr/>						
TOTALS (COOL)	13	***	153.1		66.9	
TOTALS (HEAT)	2	20.0	31.5		16.0	

M.C.A. 158 (MINIMUM CIRCUIT AMPACITY)

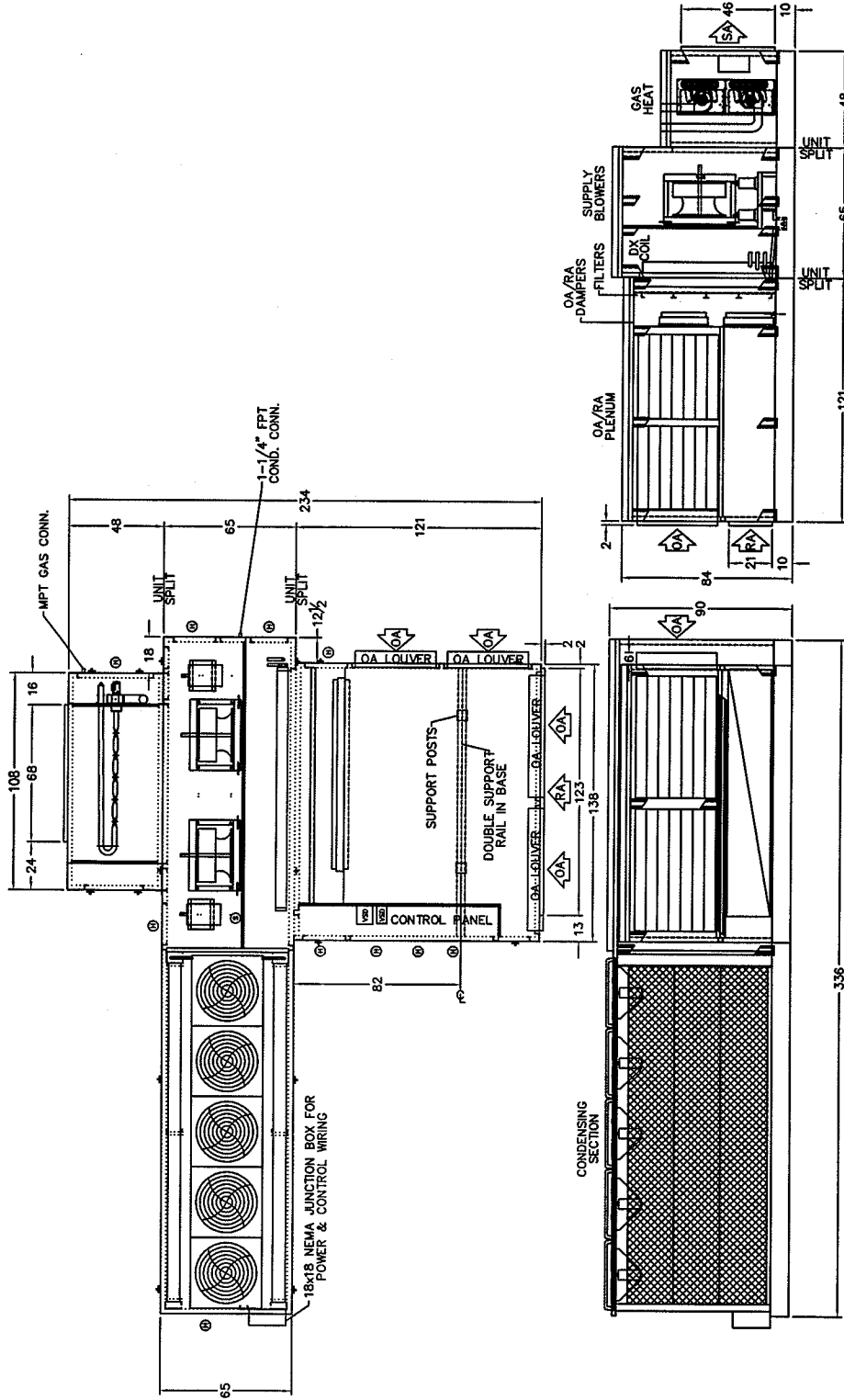
M.O.P. 175 (MAXIMUM OVERLOAD PROTECTION)

S.C.C.R. 65,000 (SHORT CIRCUIT CURRENT RATING)



SEASONS-4

ENGINEERING AND MANUFACTURING HVAC EQUIPMENT SINCE 1971



LEGEND

- (H) HINGED ACCESS DOOR
- (L) LIFT-OFF ACCESS DOOR
- (S) SCREW-ON PANEL

NOTE: O.A./E.A. LOUVERS, FURNACE VENT CAPS, ETC. MAY REQUIRE FIELD INSTALLATION

REV. #	BY	DATE	DESCRIPTION
0	JJZ	011211	ORIGINAL ISSUE
1	JJZ	012811	EXTENDED CTL PANEL TO REFRIGERATION SECTION. MOVED ECONO SUPPORT RAILS.

DIMENSIONAL DATA	
WESTFIELD MALL	
VANCOUVER WA	
AC-1,3,4,6	

DRAWN BY	JJZ
DATE	011211
SCALE	N/A
REVISION #	0
DWG. NAME	A847D01JZ