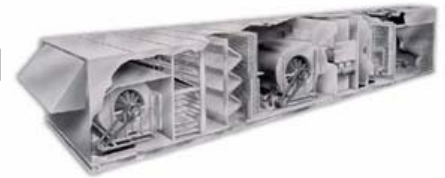


Now In Production

AUGUST 2008



OVERLOOK CENTER, WALTHAM, MA

Two (2) 150 tons Custom new **GREEN** rooftop units, 60,000 cfm with DX cooling (**R-410A** refrigerant), Evaporative condensing sections and Natural gas heat. Unit EER 12.

Representative : Noble & Associates. 317 Libbey Industrial Pkwy, suite 100, Weymouth, MA 02189

Kevin Morrison ; P 781-337-1630; F 781-337-9289



Each unit is 70 feet long. They must be built in sections for shipping but they have been designed so all refrigeration piping will be in-tact when the units ship. 5" insulation on the flooring and evaporative condensing sections are some of the requirements.

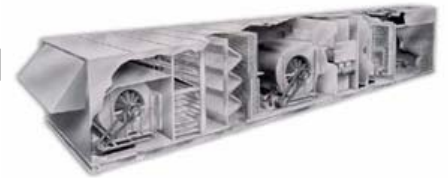


Twelve (12) scroll compressors with R-410A refrigerant, hot gas bypass on all circuits, walk-in service vestibule with aluminum tread plate floor and vestibule electric heater, and tubular type gas burners with stainless steel heat exchangers are additional features.



Now In Production

AUGUST 2008



OVERLOOK CENTER, WALTHAM, MA

Two (2) 150 tons Custom new **GREEN** rooftop units, 60,000 cfm with DX cooling (**R-410A** refrigerant), Evaporative condensing sections and Natural gas heat. Unit EER 12.

Representative : Noble & Associates. 317 Libbey Industrial Pkwy, suite 100, Weymouth, MA 02189

Kevin Morrison ; P 781-337-1630; F 781-337-9289



Twin aluminum plenum airfoil supply air blowers and return air blowers with VFDS, outside air airflow monitoring stations, CO2 sensors, high efficiency cartridge filters, and DDC controls are additional features.



The units are provided with Kynar painted exterior panels and single door handles. The sections are bolted together, completely tested then split in two sections and shipped to the jobsite.



ENGINEERING SPECIFICATIONS

JOB NAME OVERLOOK CENTER
LOCATION RUMFORD, RI
DATE PREPARED Revised: 05/15/08
SEASONS-4 REFERENCE # A032
UNIT MODEL # 3SSR70-151L-TN7.0-60SE
UNIT DESIGNATION RTU-1 & RTU-2
SYSTEM VOLTAGE 460/3/60

DESIGN DATA

Table with 2 columns: Design Data Item, Value. Rows include: TOTAL COOLING CAPACITY (BTUH): 1,823,564; SENSIBLE CAPACITY (BTUH): 1,332,492; TOTAL AIRFLOW (CFM) 60,000; OUTDOOR AIR (CFM) 12,000 - 60,000; ESTIMATED REFRIGERANT CHARGE (LBS. R410A) 525

COMPRESSOR SECTION

Table with 2 columns: Compressor Item, Value. Rows include: COMPRESSOR: COPELAND SCROLL (TANDEM); TYPE; NUMBER 12; STAGES OF CAPACITY 12

EVAPORATIVE CONDENSER

Table with 2 columns: Evaporative Condenser Item, Value. Rows include: FANS (NUMBER/HP) 2/5; AIRFLOW (CFM) 30,400; PUMPS (NUMBER/HP) 1/1.5

COOLING COIL SECTION

Table with 2 columns: Cooling Coil Item, Value. Rows include: FACE AREA (SQ-FT) 112.5; ROWS/FPI 6/8; COIL CIRCUITS (NUMBER) 6; TOTAL CAPACITY (BTUH) 1,823,564; SENSIBLE CAPACITY (BTUH) 1,332,492; ENTERING AIR TEMP (FDB/FWB) 80.0/67.0; COIL LEAVING AIR TEMP (FDB/FWB) 59.8/57.3; CONDITIONED AIR (CFM) 60,000

SUPPLY AIR BLOWER SECTION

Table with 2 columns: Supply Air Blower Item, Value. Rows include: TYPE AF SWSI PLENUM; NUMBER/SIZE 2/40.25"; AIRFLOW (CFM) 60,000; CLASS II; TOTAL STATIC PRESSURE (TSP) IN WC 6.10; EXTERNAL STATIC (ESP) IN WC 3.00; DESIGN FAN SPEED (RPM) 1,185; FAN BHP (INCLUDING DRIVE LOSSES) 2 @ 38.58; MOTOR HP 2 @ 40; MOTOR DRIVE VARIABLE FREQUENCY DRIVE

RETURN AIR BLOWER SECTION

Table with 2 columns: Return Air Blower Item, Value. Row: TYPE AF SWSI PLENUM

ENGINEERING SPECIFICATIONS

NUMBER/SIZE	1/60"
AIRFLOW (CFM)	48,000
CLASS	II
TOTAL STATIC PRESSURE (TSP) IN WC	2.25
EXTERNAL STATIC (ESP) IN WC	1.50
DESIGN FAN SPEED (RPM)	520
FAN BHP (INCLUDING DRIVE LOSSES)	23.5
MOTOR HP	25.0
MOTOR DRIVE	VARIABLE FREQUENCY DRIVE

PRE-FILTER SECTION

TYPE	2" PLEATED (MERV 8)
NUMBER/SIZE	24/24x24
TOTAL FACE AREA (SQ-FT)	96.0
FACE VELOCITY (FPM)	625

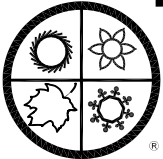
FILTER SECTION

TYPE	12" CARTRIDGE (MERV 13)
NUMBER/SIZE	24/24x24
TOTAL FACE AREA (SQ-FT)	96.0
FACE VELOCITY (FPM)	625

AUXILIARY GAS HEAT SECTION

TYPE	NATURAL GAS; TUBULAR DUCT FURNACE
INPUT CAPACITY (BTUH)	700,000
OUTPUT CAPACITY (BTUH)	560,000
CONDITIONED AIR (CFM)	60,000
CONDITIONED AIR TR (F)	9
STAGING	MODULATING
GAS CONNECTION SIZE (MPT)	1"
MIN GAS PRESSURE (IN-WC)	7"
MAX GAS PRESSURE (IN-WC)	14"

UNIT WEIGHT - OPERATING / SHIPPING (LBS) 39150 / 41800

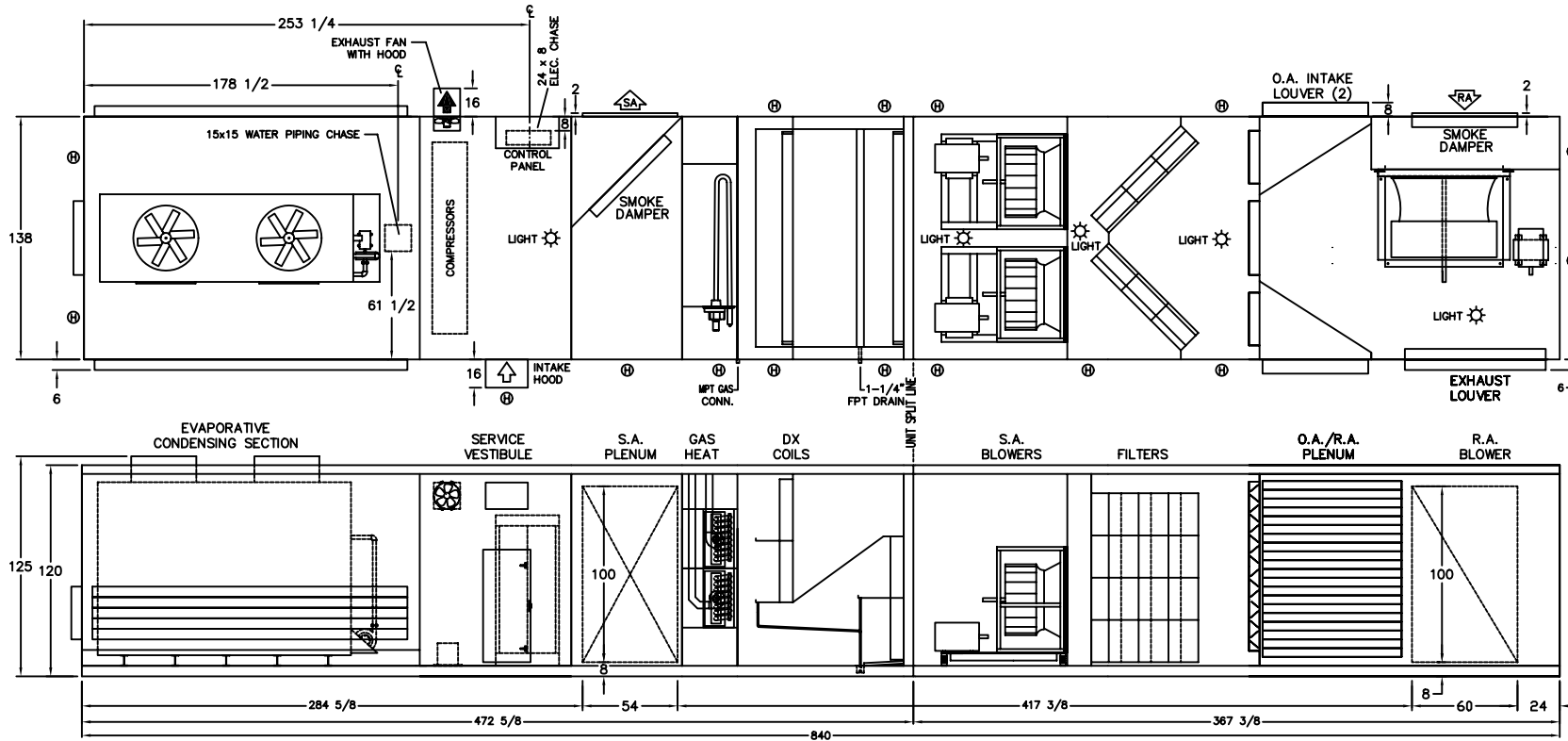


SEASONS 4

ENGINEERING AND MANUFACTURING HVAC EQUIPMENT SINCE 1971

DIMENSIONAL DATA

OVERLOOK CENTER
RUMFORD, RI
RTU-1



- (H) HINGED ACCESS DOOR
- (S) SCREW-ON ACCESS DOOR
- (L) LIFT-OFF ACCESS DOOR

REV 5, UPDATED 7/2/2008 TDM
 REV 4, UPDATED 5/19/2008 TDM
 REV 3, UPDATED 2/13/2008 TDM
 REV 2, UPDATED 2/6/2008 TDM
 2/4/2008 TDM A032D01TM

NOTE: O.A./E.A. LOUVERS, FURNACE VENT CAPS, ETC. MAY REQUIRE FIELD INSTALLATION