

Now In Production

OCTOBER 2010

HERSHEY'S WAREHOUSE, PALMYRA, PA

Two (2) 149 tons & six (80) tons custom new air cooled systems, with DX cooling and **R-410a** refrigerant. Units must maintain the space conditions at 60 deg F and 50% RH.

Representative : The Metz Company . 2211 Lehigh Street, Easton, PA 18043

Sam Gelfo ; P 610-253-9677; F 610-253-6129



The two 149 tons units are built in two sections each for shipping and rigging. They are designed so that all refrigeration circuits are intact when the units are shipped and placed into operation.

No field piping is required .

The 10 row DX coils condition the supply air down to **39 deg F dew point**.



16 scroll compressors with a digital lead compressor mounted in a walk-in service vestibule with aluminum tread plate floor, vestibule exhaust fan and electric heater.



4500 Industrial Access Road Douglasville, GA 770-489-0716 P ; 770-489-2938 F ; www.seasons4.net

Now In Production

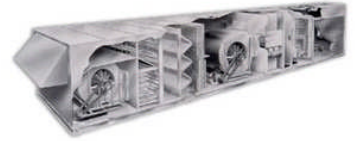
OCTOBER 2010

HERSHEY'S WAREHOUSE, PALMYRA, PA

Two (2) 149 tons & six (80) tons custom new air cooled systems, with DX cooling and **R-410a** refrigerant. Units must maintain the space conditions at 60 deg F and 50% RH.

Representative : : The Metz Company . 2211 Lehigh Street, Easton, PA 18043

Sam Gelfo ; P 610-253-9677; F 610-253-6129



Twin airfoil plenum SWSI blowers with premium efficiency TEFC motors with Heatco tubular type burners are some of the features provided in the units.



Units are cased with 2" polyurethane foam injected aluminum panels, tested, split in two sections and shipped to the jobsite.



4500 Industrial Access Road Douglasville, GA 770-489-0716 P ; 770-489-2938 F ; www.seasons4.net

ENGINEERING SPECIFICATIONS

JOB NAME	HERSHEYS EDC III
LOCATION	PALMYRA PA
DATE PREPARED	08/05/10
SEASONS-4 REFERENCE #	A68701
UNIT MODEL #	3SSR71-149Q-TN5.0-61SE
UNIT DESIGNATION	AC-127 & 128
SYSTEM VOLTAGE	460/3/60

DESIGN DATA

TOTAL COOLING CAPACITY (BTUH)	1,791,585
SENSIBLE CAPACITY (BTUH)	1,616,264
LATENT CAPACITY (BTUH)	175,321
TOTAL AIRFLOW (CFM)	60,500
OUTDOOR AIR (CFM)	2,000 - 60,500
ESTIMATED REFRIGERANT CHARGE (LBS. R410A)	688

COMPRESSOR SECTION

COMPRESSOR:

TYPE	COPELAND SCROLL (TANDEM)
NUMBER	16
STAGES OF CAPACITY	16

AIR COOLED CONDENSER SECTION

CONDENSER COIL:

COIL FACE AREA/ROWS/FPI	222.2/4/10
DESIGN AMBIENT TEMPERATURE (FDB):	95.0

CONDENSER FANS:

TYPE	PROPELLER
DIA/RPM	30/1,140
QTY/HP	12/1.5

COOLING COIL SECTION 1

FACE AREA (SQ-FT)	128.9
ROWS/FPI	10/10
COIL CIRCUITS (NUMBER)	8
TOTAL CAPACITY (BTUH)	1,791,585
SENSIBLE CAPACITY (BTUH)	1,616,264
ENTERING AIR TEMP (FDB/FWB)	63.4/51.7
COIL LEAVING AIR TEMP (FDB/FWB)	38.9/38.6
CONDITIONED AIR (CFM)	60,500

ENGINEERING SPECIFICATIONS

SUPPLY AIR BLOWER SECTION

TYPE	AF SWSI PLENUM
NUMBER/SIZE	2/40.25"
AIRFLOW (CFM)	60,500
TOTAL STATIC PRESSURE (TSP) IN WC	4.06
EXTERNAL STATIC (ESP) IN WC	2.00
DESIGN FAN SPEED (RPM)	1,062
FAN BHP (INCLUDING DRIVE LOSSES)	2 @ 27.01
MOTOR HP	2 @ 30
MOTOR DRIVE	FIXED SHEAVE

FILTER SECTION

TYPE	4" PLEATED MERV 7
NUMBER/SIZE	40/20x24
TOTAL FACE AREA (SQ-FT)	133.3
FACE VELOCITY (FPM)	454

GAS HEAT SECTION

TYPE	NATURAL GAS; TUBULAR DUCT FURNACE
INPUT CAPACITY (BTUH)	500,000
OUTPUT CAPACITY (BTUH)	400,000
CONDITIONED AIR (CFM)	60,500
CONDITIONED AIR TR (F)	6
STAGING	MODULATING
GAS CONNECTION SIZE (MPT)	1"
MIN GAS PRESSURE (IN-WC)	7"
MAX GAS PRESSURE (IN-WC)	14"

ESTIMATED UNIT WEIGHTS

TOTAL UNIT WEIGHT (LBS)	35,750
CONDENSER END SECTION WEIGHT (LBS)	23,200
RETURN AIR END SECTION WEIGHT (LBS)	12,550

ENGINEERING SPECIFICATIONS**ELECTRICAL DATA**

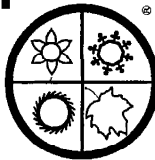
JOB NAME HERSHEY'S EDC III
LOCATION PALMYRA PA
DATE PREPARED 08/05/10
SEASONS-4 REF NUMBER A68701 **UNIT MODEL** 3SSR71-149Q-TN5.0-61SE
UNIT DESIGNATION AC-127 & 128

SYSTEM VOLTAGE	460	CONTROL VOLTAGE	120	EXT. VOLTAGE	24	
<u>ITEM</u>	<u>QTY</u>	<u>HP</u>	<u>FLA</u>	<u>LRA</u>	<u>KW</u>	<u>TYPE</u>
COMPRESSOR 1	2	***	20.0	125.0	9.7	ZPD120KCE
COMPRESSOR 1 (TDM)	2	***	20.0	125.0	9.7	ZP120KCE
COMPRESSOR 2	12	***	20.0	125.0	9.6	ZP120KCE
COND FAN	12	1.5	2.7	16.2	1.4	
SA FAN	2	30.0	35.0	223.6	21.4	Bald
CONTROL CIRCUIT			4.3			
TOTALS (COOL)	30	***	426.7		214.0	
TOTALS (HEAT)	2	60.0	74.3		42.8	

M.C.A. 435 (MINIMUM CIRCUIT AMPACITY)

M.O.P. 450 (MAXIMUM OVERLOAD PROTECTION)

S.C.C.R. 65,000 (SHORT CIRCUIT CURRENT RATING)

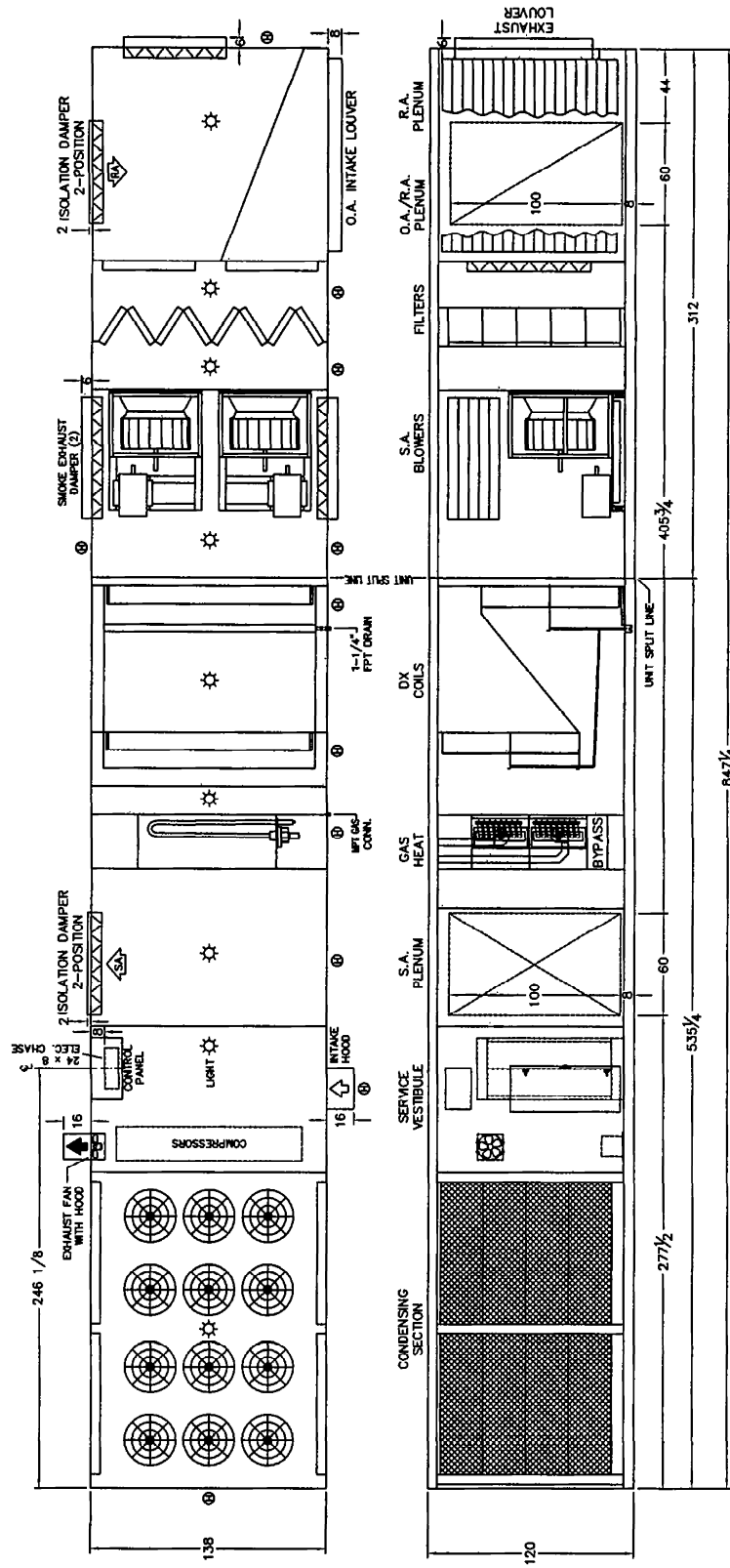


SEASON 15.4

ENGINEERING AND MANUFACTURING HVAC EQUIPMENT SINCE 1971

DIMENSIONAL DATA

HERSHEY WAREHOUSE BLDG. C
PALMYRA, PA
AC-127 & AC-128



- (H) HINGED ACCESS DOOR
- (S) SCREW-ON ACCESS DOOR
- (L) LIFT-OFF ACCESS DOOR

NOTE: O.A./E.A. LOUVERS, FURNACE VENT CAPS, ETC. MAY REQUIRE FIELD INSTALLATION

4500 INDUSTRIAL ACCESS ROAD • DOUGLASVILLE, GEORGIA 30134-3949 • 770/489-0716 • FAX 770/489-2938

A687D01JZ 080510