

Now In Production

NOVEMBER 2011



Crow Creek Tribal School, SD

Six (6) custom packaged water cooled heat pump systems with energy recovery wheels and three (3) heating only units with energy recovery wheels.

Representative: Climate Systems Inc., 3005 W. Russell St. Sioux Falls, SD 57107

John Schwartz: P 605-334-2164; F 605-334-9642 www.climatesystemsinc.com



Six (6) of the units are packaged water cooled heat-pump systems with energy wheels, digital scroll compressors, R-410a refrigerant, plenum supply and exhaust air blowers with VFDs, air flow measuring stations and wire resistance electric heaters.



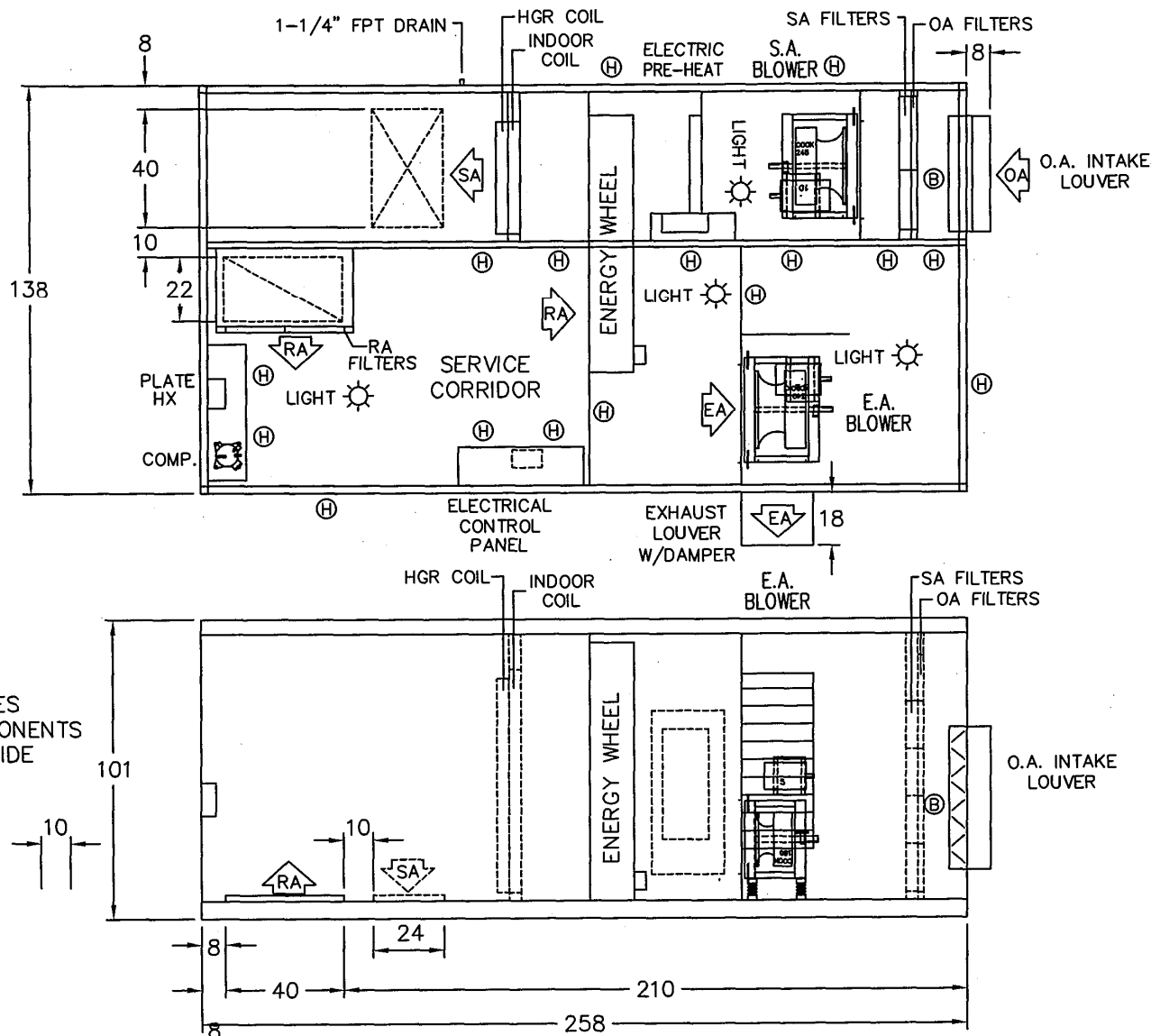
Walk-in service corridor for ease of accessibility and maintenance, service lights, hot gas reheat coils, 2" foam insulated panels with R value of 13 are some of the features provided.



4500 Industrial Access Road Douglasville, GA 770-489-0716 P ; 770-489-2938 F ; www.seasons4.net



ENGINEERING AND MANUFACTURING HVAC EQUIPMENT SINCE 1971



DASHED LINES
REPRESENT COMPONENTS
ON THE SA SIDE

LEGEND

- Ⓜ HINGED ACCESS DOOR
- Ⓛ LIFT-OFF ACCESS DOOR
- Ⓟ BALANCING DAMPER

NOTE: O.A./E.A. LOUVERS, FURNACE VENT CAPS, ETC. MAY REQUIRE FIELD INSTALLATION

REV. #				DIMENSIONAL DATA		DRAWN BY	
1	DA	2/15/2011	120" WIDE, RE-ARRANGED	CROW CREEK TRIBAL SCHL STEPHAN, SD AHU-S4		DA	
2	DA	2/16/2011	138" WIDE, RE-ARRANGED			DATE	2/7/2011
3	DA	4/13/2011	LARGER COILS, CHANGED FILTERS			SCALE	N/A
4	DA	5/10/2011	MOVED 22" RA DUCT, CHANGED FILE NAME			REVISION #	5
5	DA	5/16/2011	MOVED DUCTS, CHANGED FILE NAME			DWG. NAME	A868D04ADA

4500 INDUSTRIAL ACCESS ROAD • DOUGLASVILLE, GEORGIA 30134-3949 • 770/489-0716 • FAX 770/489-2938

Now In Production

NOVEMBER 2011



Onyx Equities, NJ

One (1) direct replacement 122 tons multi-zone split system, 33,000 CFM with 1,900 MBH input natural gas heat section. Scroll compressors and R-410A refrigerant.

Representative: Aire Aqua Inc., 30 Galesi Drive, Wayne, NJ 07470

Don Ward: P 973-256-8755; F 973-256-8765



Existing unit



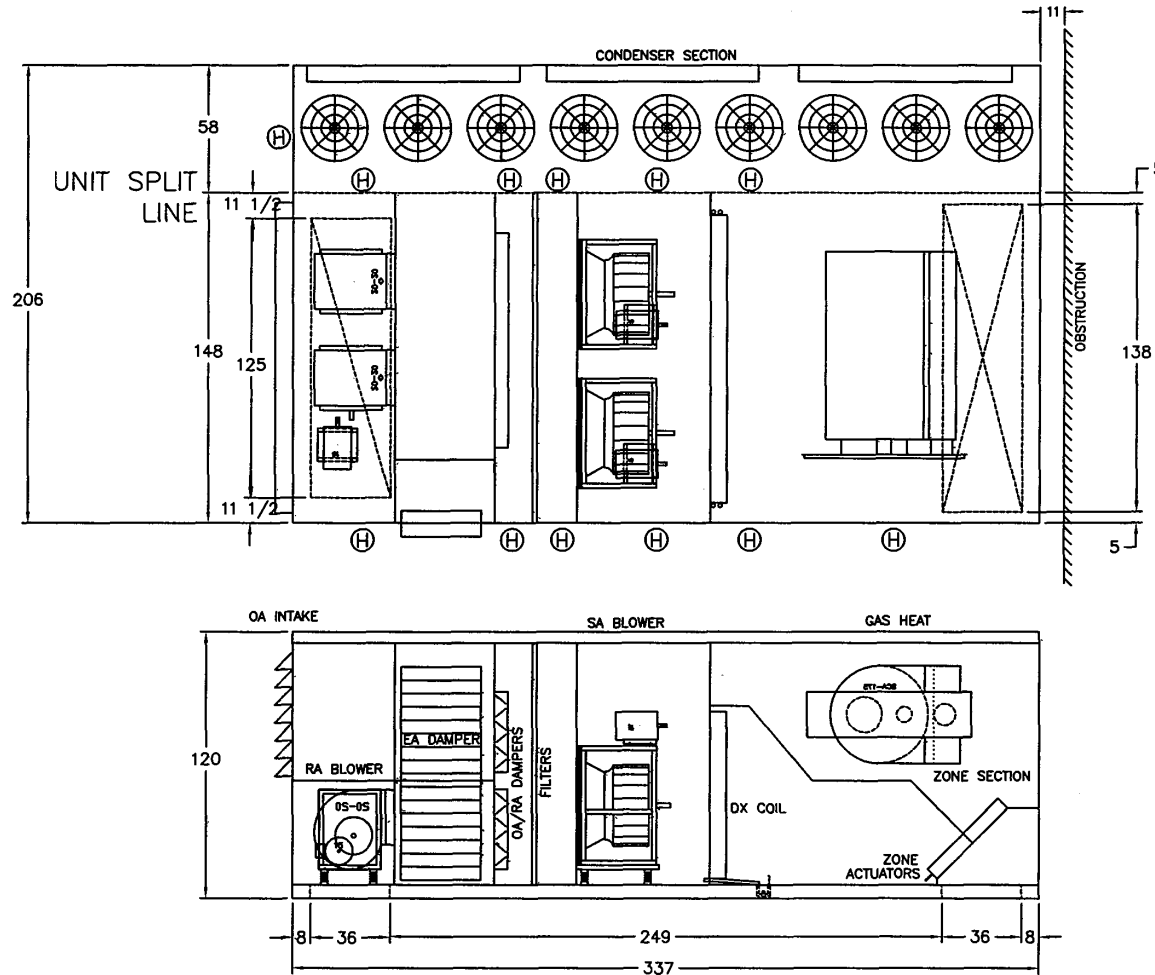
The existing unit is steel mounted with split condensing section. The new custom direct replacement unit will match the existing steel, supply and return air openings, power supplies (there are 6 power supplies), and gas connection.



Six (6) scroll compressors, two (2) airfoil SWSI plenum blowers with premium efficiency motors and return air blowers are some of the features provided. Unit is built in two sections for shipping.



4500 Industrial Access Road Douglasville, GA 770-489-0716 P ; 770-489-2938 F ; www.seasons4.net



LEGEND

- (H) HINGED ACCESS DOOR
- (L) LIFT-OFF ACCESS DOOR
- (B) BALANCING DAMPER

NOTE: O.A./E.A. LOUVERS, FURNACE VENT CAPS, ETC. MAY REQUIRE FIELD INSTALLATION

REV. #	BY	DATE	DESCRIPTION	DIMENSIONAL DATA	DRAWN BY
0	JJZ	091119	ORIGINAL ISSUE	ONYX EQUITIES TINTON NJ RTU-1	JJZ
					DATE 091911
					SCALE N/A
					REVISION # 0
					DWG. NAME B023D01JZ