

# *Now In Production*

*SEPTEMBER 2011*

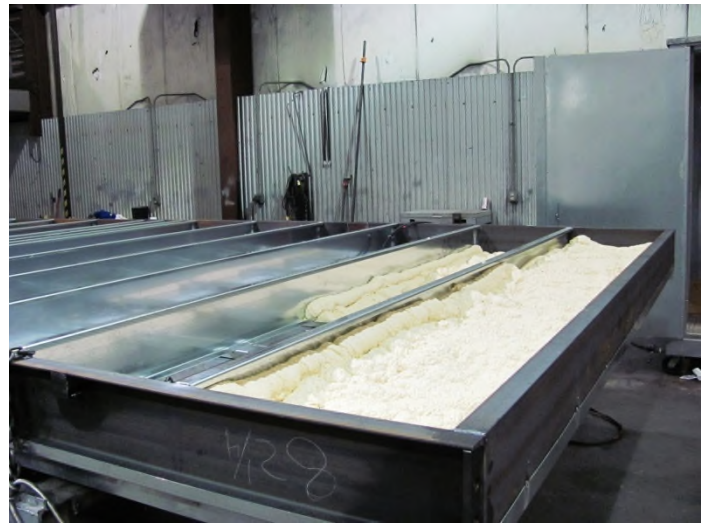
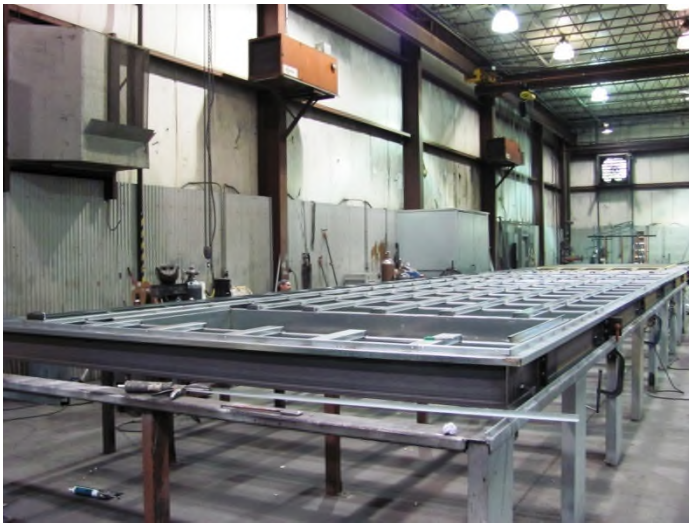


**333 Wyman Street, Waltham, MA**

Two (2) custom DX cooled packaged systems, with evaporative condensing sections, R-134A refrigerant, screw compressors and natural gas heat sections.

**Representative :Noble Associates, Inc. 317 Libbey Parkway, Suite 100, Weymouth, MA 02189**

**Craig Noble, Kevin Morison; P 781-337-1630; F 781-337-9289**



The unit base frames are built with welded structural steel, welded cross rails and channels, and sprayed with 6 inches of polyurethane foam insulation.



The entire floor of the units are welded and have a 2 inch turned up lip around the base perimeter. All posts are made out of galvanized steel and insulated with foam insulation.



**4500 Industrial Access Road Douglasville, GA 770-489-0716 P ; 770-489-2938 F ; [www.seasons4.net](http://www.seasons4.net)**



# *Now In Production*

*SEPTEMBER 2011*



**333 Wyman Street, Waltham, MA**

Two (2) custom DX cooled packaged systems, with evaporative condensing sections, R-134A refrigerant, screw compressors and natural gas heat sections.

**Representative :Noble Associates, Inc. 317 Libbey Parkway, Suite 100, Weymouth, MA 02189**

**Craig Noble, Kevin Morison; P 781-337-1630; F 781-337-9289**



The cooling system is provided with 2 screw compressors and evaporative condensing sections with R-134a refrigerant. The compressors, control panel and VFDS are mounted in a walk-in service vestibule with aluminum tread plate floor.



The supply air blower section consists of four (4) modular direct-drive plenum fans, stacked in an array with acoustically-lined internal walls.



4500 Industrial Access Road Douglasville, GA 770-489-0716 P ; 770-489-2938 F ; [www.seasons4.net](http://www.seasons4.net)



# *Now In Production*

*SEPTEMBER 2011*



**333 Wyman Street, Waltham, MA**

Two (2) custom DX cooled packaged systems, with evaporative condensing sections, R-134A refrigerant, screw compressors and natural gas heat sections.

**Representative :Noble Associates, Inc. 317 Libbey Parkway, Suite 100, Weymouth, MA 02189**

**Craig Noble, Kevin Morison; P 781-337-1630; F 781-337-9289**



High turn down natural gas power burners, airflow measuring stations, CO2 sensors, access door view ports, vestibule exhaust fan, vestibule electric heaters and condensate water recycling system are some of the features provided.



The units are cased with 2" double-wall foam insulated panels, with Kynar painted aluminum exterior and galvanized interior, completely tested and will be shipped to it's destination



4500 Industrial Access Road Douglasville, GA 770-489-0716 P ; 770-489-2938 F ; [www.seasons4.net](http://www.seasons4.net)

## ENGINEERING SPECIFICATIONS

JOB NAME	333 WYMAN STREET
LOCATION	WALTHAM, MA
DATE PREPARED	Revised: 08/29/11
SEASONS-4 REFERENCE #	A988-01
UNIT MODEL #	3SSS63-1322-PN13.-48SE
UNIT DESIGNATION	RTU-1
SYSTEM VOLTAGE	460/3/60

### DESIGN DATA

TOTAL COOLING CAPACITY (BTUH)	1,589,568
SENSIBLE CAPACITY (BTUH)	1,321,539
TOTAL AIRFLOW (CFM)	48,100
OUTDOOR AIR (CFM)	5,500 - 48,100
ESTIMATED REFRIGERANT CHARGE (LBS. R134A)	350

### COMPRESSOR SECTION

#### COMPRESSOR:

TYPE	BITZER SCREW
NUMBER	2
STAGES OF CAPACITY	2

### EVAPORATIVE CONDENSER

FANS (NUMBER/HP)	2/5
AIRFLOW (CFM)	23,600
PUMPS (NUMBER/HP)	2/1
DESIGN AMBIENT TEMPERATURE (FWB):	78.0

### COOLING COIL SECTION 1

FACE AREA (SQ-FT)	98.3
ROWS/FPI.	6/11
COIL CIRCUITS (NUMBER)	2
TOTAL CAPACITY (BTUH)	1,589,568
SENSIBLE CAPACITY (BTUH)	1,321,539
ENTERING AIR TEMP (FDB/FWB)	79.0/64.0
COIL LEAVING AIR TEMP (FDB/FWB)	54.0/52.6
CONDITIONED AIR (CFM)	48,100
AIR PRESSURE DROP	0.52

### SUPPLY AIR BLOWER SECTION

TYPE	AF SWSI PLENUM (95% WHEEL WIDTH)
NUMBER/SIZE	4/27X95"
AIRFLOW (CFM)	48,100
TOTAL STATIC PRESSURE (TSP) IN WC	5.60
EXTERNAL STATIC (ESP) IN WC	2.00
DESIGN FAN SPEED (RPM)	1,747
FAN BHP	4 @ 15.7
MOTOR HP	4 @ 20
MOTOR DRIVE	DIRECT DRIVE W/ VFD

## ENGINEERING SPECIFICATIONS

### RETURN AIR BLOWER SECTION

TYPE	AF SWSI PLENUM
NUMBER/SIZE	1/49"
AIRFLOW (CFM)	42,600
TOTAL STATIC PRESSURE (TSP) IN WC	1.25
EXTERNAL STATIC (ESP) IN WC	0.75
DESIGN FAN SPEED (RPM)	675
FAN BHP (INCLUDING DRIVE LOSSES)	15.7
MOTOR HP	20.0
MOTOR DRIVE	FIXED SHEAVE W/ VFD

### PRE-FILTER SECTION

TYPE	2" PLEATED; MERV 7
NUMBER/SIZE	4/12x24, 20/24x24
TOTAL FACE AREA (SQ-FT)	88.0
FACE VELOCITY (FPM)	547

### MAIN FILTER SECTION

TYPE	12" RIGID; MERV 14
NUMBER/SIZE	4/12x24, 20/24x24
TOTAL FACE AREA (SQ-FT)	88.0
FACE VELOCITY (FPM)	547

### GAS HEAT SECTION

TYPE	NATURAL GAS; POWER BURNER
INPUT CAPACITY (BTUH)	1,300,000
OUTPUT CAPACITY (BTUH)	1,040,000
CONDITIONED AIR (CFM)	48,100
CONDITIONED AIR TR (F)	20
STAGING	MODULATING
GAS CONNECTION SIZE (MPT)	1-1/2"
MIN GAS PRESSURE (IN-WC)	7"
MAX GAS PRESSURE (IN-WC)	14"

### UNIT SECTION WEIGHTS (LBS)

SECTION 1	11,400
SECTION 2	7,600
SECTION 3	7,600
SECTION 4	11,400
SECTION 5	7,000

UNIT SHIPPING WEIGHT (LBS)	42,500
UNIT OPERATING WEIGHT (LBS)	45,000

**ENGINEERING SPECIFICATIONS  
ELECTRICAL DATA**

**JOB NAME** 333 WYMAN STREET  
**LOCATION** WALTHAM, MA  
**DATE PREPARED** Revised: 08/29/11  
**SEASONS-4 REF NUMBER** A988-01 **UNIT MODEL** 3SSS63-1322-PN13.-48SE  
**UNIT DESIGNATION** RTU-1

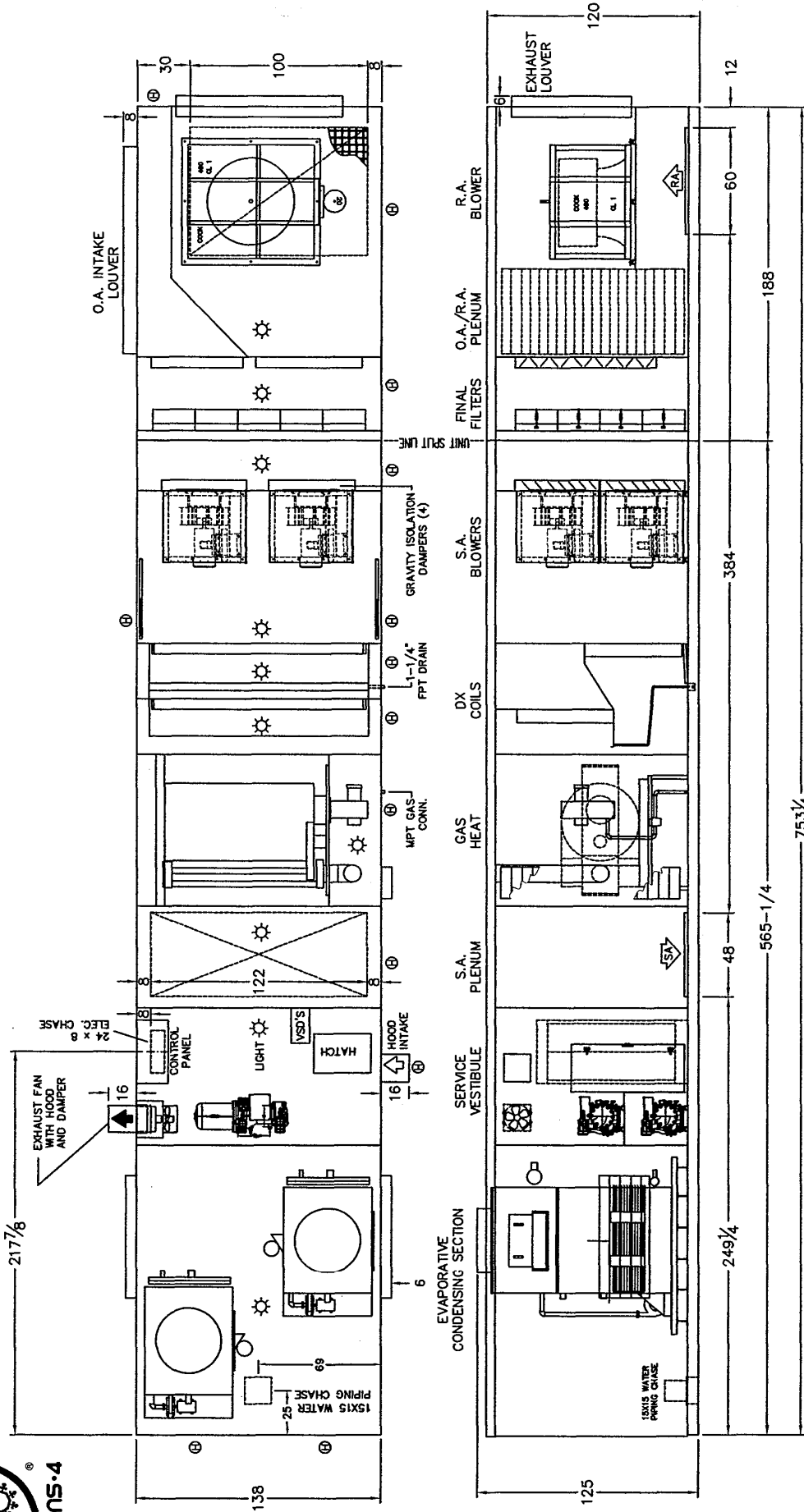
<b>SYSTEM VOLTAGE</b>	460	<b>CONTROL VOLTAGE</b>	120	<b>EXT. VOLTAGE</b>	24	
<u>ITEM</u>	<u>QTY</u>	<u>HP</u>	<u>FLA</u>	<u>LRA</u>	<u>KW</u>	<u>TYPE</u>
COMPS	2	***	120.0	485.0	45.6	CSH7571-70Y
EVAP COND FAN	2	5.0	6.8	46.0	4.5	
EVAP COND PUMP	2	1.0	1.7	17.8	1.0	
SA FAN	4	20.0	23.5	160.8	12.6	Bald
RA FAN	1	20.0	23.5	160.8	12.6	Bald
CONTROL CIRCUIT			6.5			
CONVENIENCE OUTLET			6.5			20 Amps
SUMP HEATER	1		2.5		2.0	
SUMP HEATER	1		2.5		2.0	
VESTIBULE HEATER	1		6.3		5.0	
TOTALS (COOL)	13	***	387.5		165.4	
TOTALS (HEAT)	8	100.0	141.9		72.0	

M.C.A. 418 (MINIMUM CIRCUIT AMPACITY)  
M.O.P. 500 (MAXIMUM OVERLOAD PROTECTION)  
S.C.C.R. 65,000 (SHORT CIRCUIT CURRENT RATING)



SEASONS 4

ENGINEERING AND MANUFACTURING HVAC EQUIPMENT SINCE 1971



LEGEND

- Ⓜ HINGED ACCESS DOOR
- Ⓛ LIFT-OFF ACCESS DOOR
- Ⓢ BALANCING DAMPER

NOTE: O.A./E.A. LOUVERS, FURNACE VENT CAPS, ETC. MAY REQUIRE FIELD INSTALLATION

REV. #		BY	DATE	DESCRIPTION	DIMENSIONAL DATA		DRAWN BY		KS
5	DA	7/13/2011	REMOVED SMOKE DAMPERS, ADJUSTED SPLIT DIMS		333 WYMAN STREET		DATE	1/25/2011	
6	DA	7/25/2011	CHANGED BACK TO RECOLD CONDENSER		WALTHAM, MA		SCALE	N/A	
7	DA	7/26/2011	CHANGED TO RECOLD MC150		RTU-1		REVISION #	9	
8	DA	7/26/2011	CHANGED TO RECOLD MC70 (2)				DWG. NAME	A988D01DA	
9	DR	8/22/2011	OFFSET COND. UNITS. ADDED VEST. HATCH. ADDED DOOR. MIRRORRED VEST. FAN & HOOD.						

4500 INDUSTRIAL ACCESS ROAD • DOUGLASVILLE, GEORGIA 30134-3949 • 770/489-0716 • FAX 770/489-2938